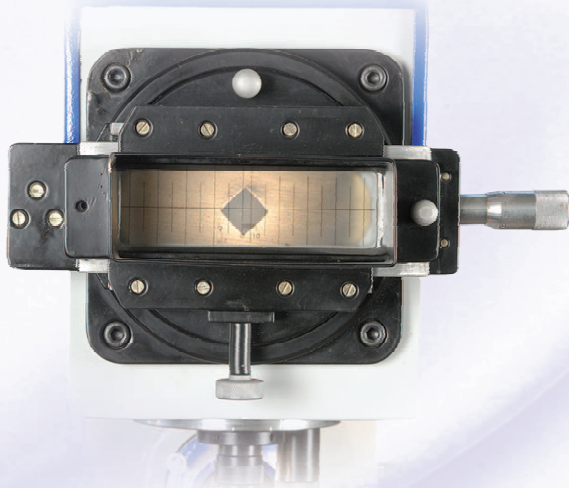




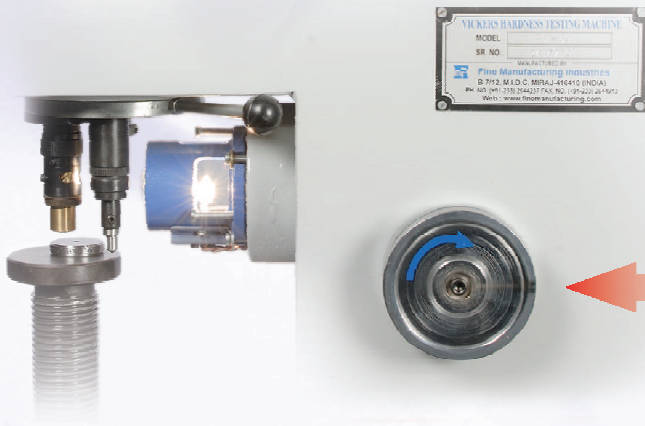
Vickers Hardness Testers



Mastering the fine art of testing

Salient Features :

- Table Top sturdy Model.
- Front projection screen with Micrometer with Optical system List Count of 0.0005 mm.
- Motorised Loading & Unloading of Loads.
- Load selection By Indexible Load Selection Knob.
- Very wide testing range from very soft Metals to Very Hard Metals.
- Models with minimum 1 Kg Load are available.
- The illumination light goes off during the application of Load which reduces the operator's fatigue due to continuous light illumination as well as increases Bulb life.
- State of Art Load Damping system for a very smooth & Jerk free Loading & unloading of applied Load.
- Machine Confirms to IS: 1754-2002 for Vickers & IS: 2281-2005 / BS240 for Brinell.
- Four model are available:
 - TV-50 With Loads 5 to 50 Kgf.
 - TV-250 With loads 5 to 250 Kgf.
 - TV-50 (SPL.) With Loads 1 to 50 Kgf.
 - TV250 (SPL.) With loads 1 to 250 Kgf.



Load Selection Knob :

Unidirectional Load Selection Knob for selection of Load from 1 Kg to 250 Kg. for trouble free load selection.

Technical specifications:

Description	TV-50	TV-50 (SPL)	TV-250	TV-250 (SPL.)
Loads (Kgf.)	5, 10, 20,30 & 50	1, 5, 10, 20 ,30 & 50	5, 10, 20 ,30, 50 for Vickers 62.5, 187.5, 250 for Brinell	1, 5, 10, 20 ,30, 50 for Vickers 62.5, 187.5, 250 for Brinell
Maximum Test height (mm)	200 mm	200 mm	200 mm	200 mm
Depth of throat (mm)	150 mm	150 mm	150 mm	150 mm
Weight Approx. (Kgf)	180	180	180	180
Dimension L x W x H mm	660x180x850 mm	660 x 250 x 850 mm	660 x 250 x 850 mm	660 x 250 x 850 mm
Connected load	0.1 KVA, 1 Phase AC, 220V, 50 Hz			

Standard Accessories

Item Description	TV-50	TV-50 (SPL.)	TV-250	TV-250 (SPL.)
1. Flat Table of 100mm Dia.	1 No.	1 No.	1 No.	1 No.
2. Vee Table for Specimen - 6 to 80 mm Dia	1 No.	1 No.	1 No.	1 No.
3. Vickers Diamond Indenter	1 No.	1 No.	1 No.	1 No.
4.Ø2.5, 5mm Ball Indenter	---	---	1 No. each	1 No. each
5.Ø2.5, 5mm Steel Balls	----	----	5 No. each	5 No. each
6. Vickers test block	1 No.	1 No.	1 No.	1 No.
7. Brinell test block	----	----	1 No.	1 No.
8. Electrical Cord	1 No.	1 No.	1 No.	1 No.
9. Instruction Manual	1 No.	1 No.	1 No.	1 No.

FMI Reserves the rights of change in above specification due to constant improvement in design.



Manufactured By :

Fine Manufacturing Industries

B-7/12, M.I.D.C. Area, MIRAJ - 416410. (Maharashtra), India.

Phone : +91 233 2644237, 2644238, Fax : +91 233 2644913

e-mail : san_fm@sancharnet.in, website : www.finemanufacturing.com

e-mail : san_fm@sancharnet.in, website : www.finemanufacturing.com
response@finemanufacturing.com